

# Short-term recovery of physical activity and knee function after an acute knee injury

Sanne Fomin,<sup>1</sup> Håkan Gauffin,<sup>2</sup> Joanna Kvist <sup>1,3</sup>

**To cite:** Fomin S, Gauffin H, Kvist J. Short-term recovery of physical activity and knee function after an acute knee injury. *BMJ Open Sport & Exercise Medicine* 2020;**6**:e000950. doi:10.1136/bmjsem-2020-000950

► Additional material is published online only. To view, please visit the journal online (<http://dx.doi.org/10.1136/bmjsem-2020-000950>).

Accepted 17 December 2020



© Author(s) (or their employer(s)) 2020. Re-use permitted under CC BY-NC. No commercial re-use. See rights and permissions. Published by BMJ.

<sup>1</sup>Unit of Physiotherapy, Department of Health, Medicine and Caring Science, Linköping University, Linköping, Sweden

<sup>2</sup>Orthopaedics. Department of Biomedical and Clinical Sciences, Linköping University, Linköping, Sweden

<sup>3</sup>Center for Medical Image Science and Visualization (CMIV), Department of Health, Medicine and Caring Sciences, Linköping University, Linköping, Sweden

**Correspondence to**  
Professor Joanna Kvist;  
[joanna.kvist@liu.se](mailto:joanna.kvist@liu.se)

## ABSTRACT

**Objectives** To describe self-reported knee function, participation in physical activity and the number of knee surgeries at 3 and 6 months following acute knee injury. **Methods** Prospective cohort study. Participants, aged 15–40 years with an acute knee injury sustained no more than 6 weeks prior to inclusion, were recruited. There were 279 participants with ACL injury and 101 participants with other acute knee injuries included. Follow-up questionnaires were sent at 3 and 6 months after injury. Demographic information, activity participation, International Knee Documentation Committee subjective knee form (IKDC-SKF) and the Single Assessment Numeric Evaluation (SANE) score were collected. Additional knee injuries were obtained from self-report and medical charts. **Results** The IKDC-SKF, SANE and physical activity participation were reduced at 3-month and 6-month follow-up. The number of participants who achieved health-promoting physical activity levels was reduced by 50% at 6-month follow-up compared with before injury. Seventeen per cent of participants with ACL injury and 41% of participants with other acute knee injuries had returned to their preinjury physical activity at 6 months. Participants with ACL injury reported worse knee function, lower physical activity participation and had more surgeries (128 surgeries, including 109 ACL-reconstructions) compared with participants with other acute knee injuries (six surgeries).

**Conclusion** Acute knee injuries, including ACL injuries, affected self-reported knee function and physical activity participation for at least 6 months after index injury. More research is needed to understand how best to help people with acute knee injuries return to physical activity and achieve satisfactory knee function.

## INTRODUCTION

In Sweden, knee injuries account for approximately 8% of all acute musculoskeletal injuries presenting to hospital emergency departments every year. About one-third of these injuries occurred during sports.<sup>1</sup> Although many acute injuries occur during physical activity participation, the health-related benefits of being physically active outweigh the risks of injury.

Physical activity is a collective term for all activities that at moderate intensity lead to

## What are the new findings?

- Acute knee injuries, including ACL injuries, affected self-reported knee function and physical activity participation at a minimum 6 months after index injury.
- Most patients with acute knee injury did not achieve full recovery in the first 6 months after injury.

## How might it impact on clinical practice in the near future?

- Clinicians should give more attention to patients with acute knee injury in order to help them return to their preinjury physical activity, and achieve satisfactory knee function.

faster breathing, increased heart rate and feeling warmer. Adults are recommended to participate in at least 150 min/week of moderate intensity physical activity per week, to realise health benefits. Physical activity can be a walk, run or going to the gym but also includes organised and competitive sports.<sup>2</sup> Basketball, football, handball and floorball are the sports with most participants in Sweden, and where knee injuries are most common.<sup>1 3</sup> ACL injuries are the most investigated acute knee injury, but other ligament injuries, meniscal injuries, cartilage injuries or patellar dislocation are common acute knee injuries<sup>1 4</sup> that affect knee-specific function.<sup>5 6</sup>

Physical activity is decreased following any type of acute knee injury and many patients do not return to preinjury level of physical activity.<sup>7–14</sup> Sports are many young people's primary physical activity<sup>15</sup> and especially team sports have a positive effect on social and psychological health.<sup>16</sup> All types of physical activity are important to benefit health, improve and maintain quality of life, and for reducing the risk of many diseases including knee osteoarthritis.<sup>2 17</sup> Most studies investigate how return to physical activity is affected



after an ACL injury or reconstruction. The effect of other acute knee injuries on participation in physical activity is less studied. Previous observations suggest that level of physical activity participation following knee injury may differ according to the type of injury.<sup>5 10–14</sup> The aim of the present study was to describe self-reported knee function, participation in physical activity and the number of knee surgeries at 3 and 6 months following acute knee injury.

## METHODS

### Setting

This study is a part of the NACOX study that is a prospective, multicentre cohort study.<sup>18</sup> Patients or the public were not involved in the design, or conduct, or reporting, or dissemination plans of our research. Participants were consecutively recruited over approximately 20 months, from six different sites in Sweden. Participants provided informed consent to participate.

### Participants

People seeking medical care, between October 2016 and October 2018, for an acute knee injury sustained no more than 6 weeks prior to presentation, and aged between 15 and 40 years at time of injury, were eligible. Some clinics included all participants with knee injuries and other clinics only included participants with ACL injury. Participants were excluded if they met any of following criteria: previous ACL injury/reconstruction to the same knee, fractures that required separate treatment, inability to understand written and spoken Swedish language, cognitive impairments, other illness or injury that impaired function (eg, fibromyalgia, rheumatic diseases and other diagnoses associated with chronic pain).

### Procedure

Participants were recruited between October 2016 and October 2018. Participants received a clinical diagnosis from an orthopaedic surgeon and MRI when required to confirm the diagnosis and were treated according to usual care. For ACL injuries, participants usually undergo rehabilitation before a decision for ACL reconstruction (ACLR). Other surgeries, for example, meniscectomies, are performed when needed according to patients' symptoms (for more details, see the NACOX protocol<sup>18</sup>). In the NACOX study, questionnaires are sent to the participants via short message at smartphone or email at various time points after injury. For the current analysis, data collected using the baseline questionnaire, and 3-month and 6-month follow-up questionnaires were analysed. In addition, medical charts with 6 months follow-up after the injury were reviewed.

### Outcomes

Demographic and baseline characteristics including age, sex, body mass index, occupation, preinjury activity and level of participation, medical and injury history were collected. Specific questions were asked about recovery expectations ('when do you think your knee

will be recovered to the same level as before the injury?'), answer options: within 1 week, within 1 month, within 6 months, within 1 year, more than 1 year, the knee will never recover) and recovery of knee function, ('how do you rate your knee function compared with before the injury', graded in a six-point scale from 'fully recovered' to 'much worse').

For self-reported knee function, participants completed the Swedish version of the International Knee Documentation Committee subjective knee form (IKDC-SKF) and the Single Assessment Numeric Evaluation (SANE-score).<sup>19</sup> The IKDC-SKF is a knee-specific self-reported outcome measure for symptoms, function and participation in sports. The IKDC-SKF has good measurement properties.<sup>20 21</sup> Possible scores range from 0 to 100; a higher score indicates superior self-reported knee function. Minimal clinically important difference early after ACLR is 14 points.<sup>20</sup> Muller *et al*<sup>22</sup> defined 75.9 points and over were acceptable symptoms for patients who had undergone ACLR. The SANE is a 1-question measure where participants answer the question 'If I had to give my knee a grade from 1 to 100, with 100 being the best, I would give my knee a ...'. The SANE-score has good validity and is positively correlated with IKDC-SKF score.<sup>19 23</sup>

Self-reported frequency of participation in vigorous physical activity was collected, according to the recommendations from Swedish National Board of Welfare, with a separate question, 'how much time did you spend last week on exercising at a level that makes you short winded, for example, running, fitness class or ball games'.<sup>24</sup> Participants reported the type of physical activity they participated in (eg, football, strength training) and the level of participation during the previous week. Participation in up to three activities could be recorded at every questionnaire. The most strenuous activity was analysed.

Activity level was classified according to Tegner Activity Scale<sup>25</sup> and modified IKDC activity level.<sup>26 27</sup> In the Tegner Activity Scale, sports activities and work are graded on an 11-level scale, according to functional demands on the knee. Level 0 is no participation in physical activity due to knee problems; level X is participation in elite football. In the modified IKDC, activity is classified in four levels: level I is pivoting and contact sports, level II is pivoting non-contact sports and III is neither pivoting nor contact sport. Participants who were not participating in physical activity, or who are completing rehabilitation were classified in level IV.

Information about any knee surgery during the follow-up period was collected by a direct question to the participants and reviewing medical charts.

### Data analysis

For the current analyses, participants were grouped according to injury in two main groups, that is, ACL-injury and other knee injuries. Specific diagnoses are reported in online supplemental file. Participants with

two or more knee injuries were grouped based on the most serious injury.

Injury groups are described with descriptive statistics. Missing data and loss to follow-up is reported under results and in tables.

Comparisons between groups were made with  $\chi^2$  tests or Mann-Whitney U tests, and within groups with repeated analysis of variance (ANOVA) or Friedman with post-hoc tests, as appropriate.

## RESULT

A total of 279 participants with ACL injury and 101 participants with other acute knee injuries answered the baseline questionnaire. Twelve participants (4%) with ACL injury had a clinical diagnosis (no MRI) and 11 of them had later ACLR. Nine participants (9%) with other knee injuries had clinical diagnosis (two medial collateral ligament (MCL) injuries, one meniscus injury (had meniscectomy 6 weeks after the index injury) and six with other knee injuries (three had no MRI due to medical reasons, ie, pregnancy, obesity and claustrophobia)). Forty-three per cent of the participants with ACL injuries had at least one concomitant injury (online supplemental file, [table 1](#)). Subgroup analyses revealed no significant differences in IKDC-SKF at 6 months between participants with and without concomitant injuries.

There were 219 (78%) participants with ACL injury and 52 (51%) participants with other acute knee injury who completed the questionnaire at 6 months follow-up ([figure 1](#), online supplemental file).

### Demographics

The most common activity at time of injury was football. The majority of participants were physically active at a 'recreational' or 'competitive' level before injury. Almost every participant (94%) reported 'return to preinjury physical activity' was a rehabilitation goal ([table 1](#)).

### Self-reported knee function and knee problems

Participants reported deteriorated knee function at all follow-up times, where 70% of the participants with ACL injury and 47% with other knee injuries reported IKDC-SKF score below the threshold of 75.9 defining patient acceptable state<sup>22</sup> ([table 2](#)). The IKDC-SKF and SANE scores increased significantly from baseline to 3 and 6 months after injury. Fewer participants with ACL injury reported their knee function fully recovered at both 3 months and 6 months follow-up, compared with participants with other knee injuries ( $p<0.001$ ). At 6 months follow-up, 3% of participants with ACL injury compared with 23% of participants with other knee injuries reported their knee function was fully recovered.

### Return to and participation in physical activity

Sixty-nine per cent of participants with ACL injury and 62% of participants with other knee injuries were physically active >120 min/week before their knee injury. At 6-month follow-up, the number of participants who

**Table 1** Baseline demographics

Variable	ACL injuries (n=279)	Other knee injuries (n=101)
Age, mean (range) (years)	25 (15–40)	25 (15–40)
Male/female, n (%)	136/143 (49/51)	56/45 (55/45)
BMI>25, n (%)	79 (29) <sup>4</sup>	33 (34) <sup>4</sup>
Occupation, n (%)		
Student	121 (44)	38 (39)
Employed	147 (53)	57 (58)
Other	8 (3) <sup>3</sup>	3 (3) <sup>3</sup>
Activity at injury, n (%)		
Football (soccer)	110 (39)	36 (36)
Floorball	34 (12)	5 (5)
Skiing	55 (20)	14 (14)
Handball	17 (6)	2 (2)
Basketball	6 (2)	0 (0)
Sports on ice†	2 (1)	9 (9)
Spare time	8 (3)	11 (11)
Other sports	49 (18) <sup>2</sup>	33 (33) <sup>3</sup>
Physical activity level, n (%)		
Elite	62 (23)	11 (13)
Competitive	100 (37)	33 (38)
Recreational	91 (34)	29 (33)
Other	17 (1)	14 (16)
Goal to return to preinjury physical activity, n (%)	257 (93)	87 (94)
Recovery expectation‡, n (%)		
<6 months	136 (50)	81 (86)
>6 months	120 (44)	9 (10)
Will never recover	18 (7) <sup>5</sup>	3 (4) <sup>7*</sup>

Superscript number indicates number of participants with missing data.

\*Significantly different to ACL injury group ( $p<0.05$ ).

†Ice-hockey and bandy.

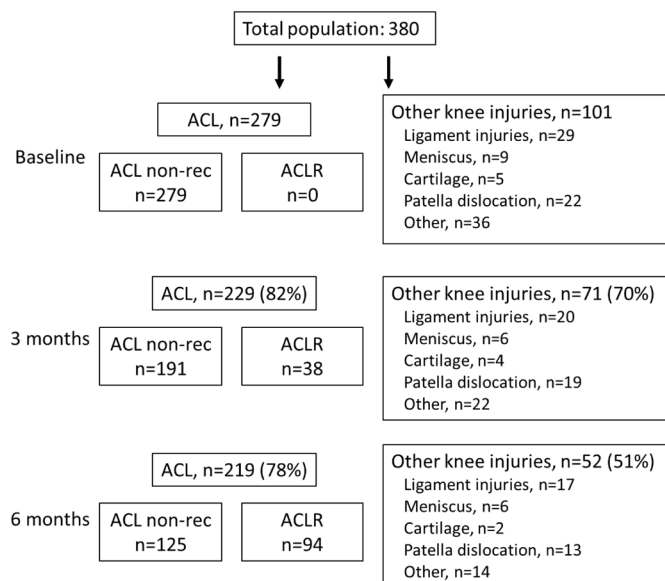
‡Question for recovery expectation: 'when do you think your knee will be recovered to the same level as before the injury?'.  
BMI, body mass index.

participated in >120 min physical activity per week was 27% and 35%, respectively (no statistical difference between groups). Before injury, there was no difference between the groups in weekly participation in physical activity or type of physical activity. Activity level (Tegner Activity Scale and IKDC level) was decreased at 3 and 6 months after injury in both groups ( $p<0.001$ ). Participants with ACL injury had a significantly lower Tegner Activity Scale score ( $p=0.022$ ) and IKDC level of activity ( $p<0.001$ ) at 3-month and 6-month follow-up compared with participants with other knee injuries ([table 3](#)).

At 6-month follow-up, 17% of participants with ACL injury and 41% of participants with other acute knee injuries had returned to their preinjury physical activity.

Problems related to the knee injury (currently completing rehabilitation, poor knee function or fear for





**Figure 1** Flowchart of participants, type of injury and number of participants at baseline, 3-month and 6-month follow-up. ACLR, ACL reconstruction.

new injury/not trusting the knee) was the reason for not returning to preinjury physical activity in 92% of participants with ACL injury and 83% of participants with other knee injuries (table 3).

### Surgery

Of the 279 participants with ACL injury, 109 participants (39%) had ACLR within the first 6 months after primary injury (mean 3.3, SD 1.5 months after injury) and 19 (7%) had other knee surgeries. Six participants with other acute injuries (6%), had knee surgery within the first 6 months after the primary injury (table 4, figure 2).

### DISCUSSION

Self-reported knee function and physical activity participation was reduced at 3-month and 6-month follow-up after acute knee injury, and only one-third of participants were physically active at health-promoting levels (>120 min/week<sup>2</sup>) 6 months after acute knee injury. Participants with ACL injury reported worse knee function

and lower physical activity participation compared with participants with other acute knee injuries.

### Self-reported knee function

Participants with ACL injury rated their knee function worse than participants with other acute knee injuries. However, our results suggest that other acute knee injuries also affect knee function. Fewer participants with ACL injury achieved full recovery within 6 months from the injury, but participants with other knee injuries were also frequently affected. Fewer than one in every four participants with other acute knee injuries were fully recovered at 6 months follow-up. McGuine *et al*<sup>5</sup> reported similar results in female athletes, where IKDC-SKF score was reduced for a period of 3–12 months after acute knee injury. Knee function depended on type of knee injury, and even participants with injuries that were considered less serious were almost as affected as participants with ACL injury. Straume-Næsheim *et al*<sup>28</sup> showed that patients with recurrent lateral patella dislocation were affected similarly to patients with ACL injury. However, patella dislocations were not treated in the same serious and effective way as ACL injuries, and patients had to wait longer for treatment. There is a strong focus on research of treatment and rehabilitation after ACL injury, and there are guidelines about how to manage ACL injury.<sup>29</sup> Less is known about knee function and physical activity participation after other acute knee injuries. Although, our results suggest other acute knee injuries may have a similar impact to ACL injury.

Low self-reported knee function may be a reflection of our participants' high demands on knee function due to high activity level before their knee injury. Nearly three out of four participants were active in contact or pivoting sports before injury, and participation time, type and level of physical activity before the injury did not differ between the injury groups (ACL and other knee injuries). Both injury groups had reduced activity levels at 3-month and 6-month follow-up, and participants had switched to less knee demanding physical activity (eg, from football and floorball to cycling, walking, running and strength training). Although the goal of the majority

**Table 2** Self-reported knee function at baseline, 3-month and 6-month follow-up

	Baseline		3 months		6 months	
	ACL (n=279)	Other (n=101)	ACL (n=229)	Other (n=71)	ACL (n=219)	Other (n=52)
IKDC-SKF, mean (SD)	43 (15) <sup>49</sup>	51 (17) <sup>30*</sup>	55 (17) <sup>29</sup>	66 (19) <sup>2*</sup>	63 (19) <sup>68</sup>	74 (18) <sup>3*</sup>
SANE, mean (SD)	39 (21) <sup>9</sup>	47 (20) <sup>5*</sup>	62 (20) <sup>7</sup>	73 (22) <sup>7*</sup>	66 (21) <sup>9</sup>	76 (24) <sup>5*</sup>
Knee function recovery, n (%)						
Fully recovered			1 (1)	8 (11)	5 (3)	12 (23)
Large recovery			117 (54)	47 (67)	103 (60)	31 (60)
Small/no recovery			92 (43) <sup>13</sup>	14 (20) <sup>1*</sup>	58 (34) <sup>49</sup>	9 (17) <sup>*</sup>

Superscript number indicates number of participants with missing data. Missing values at IKDC-SKF: at 3 months, 22 of the 29 patients in the ACL-group had ACL-reconstruction within 3 months from injury and at 6 months, 65 of 68 patients had ACL-reconstruction within 6 months.

\*Significant different to ACL-group ( $p < 0.05$ ).

IKDC-SKF, International Knee Documentation Committee subjective knee form; SANE, Single Assessment Numeric Evaluation.

**Table 3** Physical activity (PA) participation before and 3 and 6 months after the knee injury

	Before injury		3 months		6 months	
	ACL (n=279)	Other (n=101)	ACL (n=229)	Other (n=71)	ACL (n=219)	Other (n=52)
Weekly participation in PA at moderate intensity						
0 min, n (%)	1 (0)	3 (3)	48 (22)	8 (11)	46 (22)	7 (14)
0–60 min, n (%)	30 (11)	14 (14)	68 (31)	20 (29)	55 (26)	14 (27)
60–120 min, n (%)	55 (20)	20 (21)	47 (21)	18 (26)	52 (25)	13 (25)
>120 min, n (%)	191 (69) <sup>2</sup>	60 (62) <sup>4</sup>	60 (27) <sup>6</sup>	24 (34) <sup>1</sup>	56 (27) <sup>10</sup>	18 (35)
Type of PA participation, n (%)						
Football (soccer)	101 (36)	31 (32)	3 (2)	11 (16)	4 (2)	6 (12)
Floorball	32 (12)	7 (7)	1 (0.5)	0 (0)	3 (2)	1 (2)
Strength training	25 (9)	8 (8)	52 (26)	17 (24)	46 (26)	8 (15)
Running	24 (9)	5 (5)	12 (6)	4 (6)	29 (17)	2 (4)
Handball	17 (6)	3 (3)	0 (0)	0 (0)	0 (0)	0 (0)
Walking	6 (2)	4 (4)	18 (9)	5 (7)	14 (8)	6 (12)
Cycling	7 (3)	3 (3)	46 (23)	14 (20)	34 (19)	9 (17)
Other sports	49 (26) <sup>1</sup>	38 (40) <sup>5</sup>	68 (34) <sup>29</sup>	19 (27) <sup>1</sup>	46 (26) <sup>43</sup>	20 (38)
Tegner Activity Scale Median (IQR)	7 (5) <sup>1</sup>	7 (5) <sup>3</sup>	4 (2)	4 (3) <sup>*</sup>	4 (2)	4 (3) <sup>*</sup>
IKDC activity level, n (%)						
Level I	155 (56)	47 (50)	5 (2)	13 (18)	9 (4)	10 (20)
Level II	40 (14)	18 (19)	12 (5)	6 (9)	8 (4)	9 (17)
Level III	83 (30)	27 (29)	136 (59)	40 (56)	134 (61)	25 (48)
Level IV	0 (0) <sup>1</sup>	2 (2) <sup>7</sup>	76 (33) <sup>3</sup>	12 (17) <sup>*</sup>	68 (31)	8 (15) <sup>*</sup>
Return to preinjury PA, n (%)						
Goal to return†	263 (95)	92(99)				
Have returned yes/no (%)			20/181 (10/90) <sup>28</sup>	24/46 (34/66) <sup>1*</sup>	28/140 (17/83) <sup>51*</sup>	21/30 (41/59)
Reason for not returned to preinjury PA, n (%)						
Completing rehabilitation			112 (62)	26 (57)	70 (54)	9 (30)
Poor knee function			33 (18)	8 (17)	22 (17)	10 (33)
Fear/do not trust the knee			25 (14)	5 (24)	27 (21)	6 (20)
Other reason			11 (6)	1 (2)	10 (8) <sup>11</sup>	5 (17)

Superscript number indicates number of participants with missing data.

\*Significant different to ACL-group ( $p < 0.05$ ).

†Including patients who had returned.

IKDC, International Knee Documentation Committee.

of our participants was to return to their preinjury activity. Return to the preinjury sport is one of the criteria for defining successful outcome after ACL injury and/or reconstruction<sup>30</sup> and may increase patient satisfaction.<sup>9</sup> In addition, team sports, to which most of our participants

aim to return, may give further positive effects on health, compared with individual sports.<sup>31</sup> On the other hand, lifelong participation in physical activity may be more important. Return to high demanding sports after initial knee injury increases the risk for new knee injuries,<sup>32</sup> that increase the risk for both knee osteoarthritis and lower physical activity levels.<sup>33</sup> Activity modification can be central pillar of treatment after knee injuries, to reduce the risk of osteoarthritis<sup>34</sup> and make it possible for people to have a lifelong physical activity participation reaching the recommended levels.

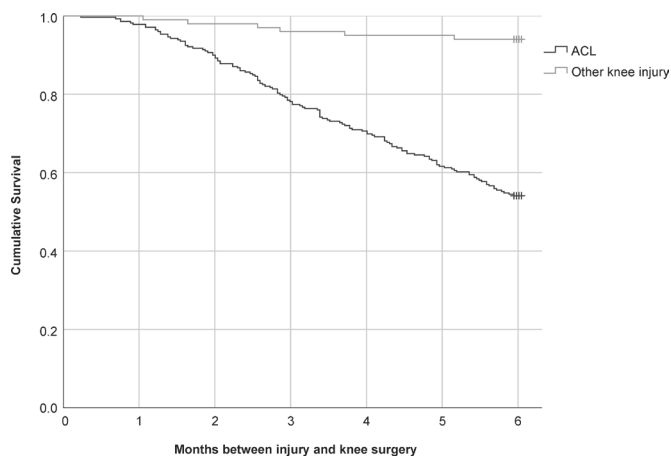
### Participation in physical activity

The number of participants who met the recommended level of physical activity before knee injury was equal to worldwide reported levels of activity (approximately 65%). This is approximately 10% higher than activity

**Table 4** Surgery within 6 months following primary injury

	ACL (n=279)	Other knee injuries (n=101)
Diagnostic arthroscopy	3	1
ACLR	109	–
Meniscus repair	3	1
Meniscus resection	7	3
Other	6	1

Main surgery is described.  
ACLR, ACL reconstruction.



**Figure 2** Kaplan-Meier curve showing time to surgery in the ACL injury group and other knee injuries group.

participation of the general Swedish population.<sup>35</sup> Three and 6 months after the knee injury, the number who met physical activity recommendations reduced by almost 50%, and only one in every three participants reached the recommended level. Most of the participants with ACL injury were still completing rehabilitation. Practicing rehabilitation exercises, especially during the middle and late phase of rehabilitation, is close to the recommended physical activity level<sup>36</sup> (ie, 20 min vigorous-intensity physical activity three times per week).<sup>2</sup> Rehabilitation after ACLR usually lasts between 9 and 12 months<sup>36</sup> and approximately 80% return to some form of sport.<sup>8</sup> On the other hand, only half of participants with other knee injuries were completing rehabilitation at the 3-month and/or 6-month follow-up. One in five participants who reported that they had not returned to their preinjury activity level were not completing rehabilitation, despite having as a goal to return to their preinjury sport. Low levels of physical activity after knee injury have been reported as long as 12 months after the injury, and physical activity level was not dependent on functional recovery.<sup>37</sup> For our participants with other knee injuries, there is a risk for continuing low levels of physical activity. Clinicians might consider whether more active input is required to facilitate full recovery and return to desired and high physical activity levels.<sup>31</sup>

### Subgroups of knee injuries

In the present study, we report all other knee injuries as one group. There were too few participants for subgroup analyses, and descriptive results for each diagnosis can be found in online supplemental file. The results indicate worse outcome after patella dislocation and cartilage injuries compared with other minor injuries. Previous studies have shown that patients with posterior cruciate ligament injury<sup>10 11</sup> and meniscus injury<sup>12</sup> could make a return to preinjury physical activity 2–6 months after the injury, depending on type of treatment. On the other hand, after a patellar dislocation, only two out of three returned to preinjury level of physical activity at all, with

or without surgery.<sup>13</sup> Our results for specific injury diagnoses support previous work.

When interpreting our results from participants with ACL injury, one must consider that 39% of the participants had ACLR within the follow-up period. The decision for ACLR within 3 months from injury was mainly taken due to participants high activity demands. The reasons for deciding on ACLR after 3 months was both knee joint instability and high activity demands.<sup>38</sup> Self-reported function and activity participation may have been influenced by the surgery. Most participants with ACL injury also reported that they were completing rehabilitation. The incidence of other knee surgeries was similar in the two groups (7 resp 6%).

### Limitations

Only one of the clinics included participants with other acute knee injuries. The grouping of the participants in ACL versus non-ACL injury may introduce a bias. Though, other characteristics like number of knee surgeries, excluding ACLR, and demographics were similar between the groups. Due to the study design,<sup>18</sup> there were some missing IKDC-SKF data from participants who had ACLR. Only half of the participants with other knee injuries responded to the 6 months questionnaire, and we were unable to conduct subgroup analyses for different injury types. Still, this is one of few studies reporting that both function and activity participation is affected after different types of knee injuries.

### CONCLUSION

Acute knee injuries, including ACL injuries, affect self-reported knee function and physical activity participation at a minimum 6 months after index injury. More research is needed for patients with different kinds of acute knee injuries to help them return to their preinjury physical activity, and achieve satisfaction with their knee function.

**Twitter** Joanna Kvist @JoannaKvist

**Acknowledgements** The authors would like to thank the participants for their valuable contribution to the study. We would also like to thank Dr Clare Ardern for language revision and Henrik Hedevid at Linköping University for statistical support. This study is a part of the NACOX-cohort, a project investigating the natural corollaries and recovery after acute ACL injury.

**Contributors** JK and HG, together with the NACOX-study group, planned the study. SF and JK performed the analyses. All authors interpreted the data. SF drafted the manuscript, that was critically revised by all authors. All authors read and approved of the final manuscript. JK is the study guarantor.

**Funding** The NACOX-cohort study is supported by the Swedish Medical Research Council (VR 2015-03687 and VR 2018-02563), Swedish Research Council for Sport Science (CIF P2017-0151, P2018-0132 and P2019-0071), ALF Grants Region Östergötland (LIO-798907, LIO-900721) and the Medical Research Council of Southeast Sweden (FORSS-856741).

**Competing interests** None declared.

**Patient consent for publication** Not required.

**Ethics approval** The study was approved by Swedish Ethical Review Authority: 2016/44-31.

**Provenance and peer review** Not commissioned; externally peer reviewed.

**Data availability statement** Deidentified data are available from the authors upon reasonable request.

**Open access** This is an open access article distributed in accordance with the Creative Commons Attribution Non Commercial (CC BY-NC 4.0) license, which permits others to distribute, remix, adapt, build upon this work non-commercially, and license their derivative works on different terms, provided the original work is properly cited, appropriate credit is given, any changes made indicated, and the use is non-commercial. See: <http://creativecommons.org/licenses/by-nc/4.0/>.

#### ORCID iD

Joanna Kvist <http://orcid.org/0000-0003-3527-5488>

#### REFERENCES

- Ferry T, Bergström U, Hedström EM, *et al*. Epidemiology of acute knee injuries seen at the Emergency Department at Umeå University Hospital, Sweden, during 15 years. *Knee Surg Sports Traumatol Arthrosc* 2014;22:1149–55.
- WHO. *Global recommendations on physical activity for health*. Geneva: World Health Organization, 2010.
- Aman M, Forsblad M, Henriksson-Larsén K. Insurance claims data: a possible solution for a national sports injury surveillance system? an evaluation of data information against ASIDD and consensus statements on sports injury surveillance. *BMJ Open* 2014;4:e005056.
- Hägglund M, Waldén M. Risk factors for acute knee injury in female youth football. *Knee Surg Sports Traumatol Arthrosc* 2016;24:737–46.
- McGuine TA, Winterstein A, Carr K, *et al*. Changes in self-reported knee function and health-related quality of life after knee injury in female athletes. *Clin J Sport Med* 2012;22:334–40.
- Lam KC, Thomas SS, Valier ARS, *et al*. Previous knee injury and health-related quality of life in collegiate athletes. *J Athl Train* 2017;52:534–40.
- Filbay SR, Ackerman IN, Russell TG, *et al*. Return to sport matters—longer-term quality of life after ACL reconstruction in people with knee difficulties. *Scand J Med Sci Sports* 2017;27:514–24.
- Ardern CL, Taylor NF, Feller JA, *et al*. Fifty-five per cent return to competitive sport following anterior cruciate ligament reconstruction surgery: an updated systematic review and meta-analysis including aspects of physical functioning and contextual factors. *Br J Sports Med* 2014;48:1543–52.
- Ardern CL, Österberg A, Sonesson S, *et al*. Satisfaction with knee function after primary anterior cruciate ligament reconstruction is associated with self-efficacy, quality of life, and returning to the Preinjury physical activity. *Arthroscopy* 2016;32:1631–8.
- Agolley D, Gabr A, Benjamin-Laing H, *et al*. Successful return to sports in athletes following non-operative management of acute isolated posterior cruciate ligament injuries: medium-term follow-up. *Bone Joint J* 2017;99-B:774–8.
- Shelbourne KD, Muthukaruppan Y. Subjective results of nonoperatively treated, acute, isolated posterior cruciate ligament injuries. *Arthroscopy* 2005;21:457–61.
- Brelín AM, Rue J-PH. Return to play following meniscus surgery. *Clin Sports Med* 2016;35:669–78.
- Ménétreay J, Putman S, Gard S. Return to sport after Patellar dislocation or following surgery for patellofemoral instability. *Knee Surg Sports Traumatol Arthrosc* 2014;22:2320–6.
- Regalado G, Lintula H, Kokki H, *et al*. Six-year outcome after non-surgical versus surgical treatment of acute primary Patellar dislocation in adolescents: a prospective randomized trial. *Knee Surg Sports Traumatol Arthrosc* 2016;24:6–11.
- Malm C, Jakobsson J, Isaksson A. Physical activity and sports-real health benefits: a review with insight into the public health of Sweden. *Sports* 2019;7. doi:10.3390/sports7050127. [Epub ahead of print: 23 May 2019].
- Andersen MH, Ottesen L, Thing LF. The social and psychological health outcomes of team sport participation in adults: an integrative review of research. *Scand J Public Health* 2019;47:832–50.
- Öiestad BE, Engebretsen L, Storheim K, *et al*. Knee osteoarthritis after anterior cruciate ligament injury: a systematic review. *Am J Sports Med* 2009;37:1434–43.
- Kvist J, Gauffin H, Tigerstrand Grevnerts H, *et al*. Natural corollaries and recovery after acute ACL injury: the NACOX cohort study protocol. *BMJ Open* 2018;8:e020543.
- Winterstein AP, McGuine TA, Carr KE, *et al*. Comparison of IKDC and SANE outcome measures following knee injury in active female patients. *Sports Health* 2013;5:523–9.
- Tigerstrand Grevnerts H, Grävare Silbernagel K, Sonesson S, *et al*. Translation and testing of measurement properties of the Swedish version of the IKDC subjective knee form. *Scand J Med Sci Sports* 2017;27:554–62.
- Grevnerts HT, Terwee CB, Kvist J. The measurement properties of the IKDC-subjective knee form. *Knee Surg Sports Traumatol Arthrosc* 2015;23:3698–706.
- Muller B, Yabroudi MA, Lynch A, *et al*. Defining thresholds for the patient acceptable symptom state for the IKDC subjective knee form and KOOS for patients who underwent ACL reconstruction. *Am J Sports Med* 2016;44:2820–6.
- Garcia AN, Cook C, Lutz A, *et al*. Concurrent validity of the single assessment numerical evaluation and patient-reported functional measures in patients with musculoskeletal disorders: an observational study. *Musculoskelet Sci Pract* 2019;44:102057.
- Olsson SJG, Ekblom Örn, Andersson E, *et al*. Categorical answer modes provide superior validity to open answers when asking for level of physical activity: a cross-sectional study. *Scand J Public Health* 2016;44:70–6.
- Tegner Y, Lysholm J. Rating systems in the evaluation of knee ligament injuries. *Clin Orthop Relat Res* 1985;198:42??49–9.
- Hefti F, Müller W, Jakob RP, *et al*. Evaluation of knee ligament injuries with the IKDC form. *Knee Surg Sports Traumatol Arthrosc* 1993;1:226–34.
- Grindem H, Eitzen I, Snyder-Mackler L, *et al*. Online registration of monthly sports participation after anterior cruciate ligament injury: a reliability and validity study. *Br J Sports Med* 2014;48:748–53.
- Straume-Næsheim TM, Randsborg P-H, Mikaelson JR, *et al*. Recurrent lateral patella dislocation affects knee function as much as ACL deficiency - however patients wait five times longer for treatment. *BMC Musculoskelet Disord* 2019;20:318.
- Grevnerts HT, Fältström A, Sonesson S, *et al*. Activity demands and instability are the most important factors for recommending to treat ACL injuries with reconstruction. *Knee Surg Sports Traumatol Arthrosc* 2018;26:2401–9.
- Lynch AD, Logerstedt DS, Grindem H, *et al*. Consensus criteria for defining 'successful outcome' after ACL injury and reconstruction: a Delaware-Oslo ACL cohort investigation. *Br J Sports Med* 2015;49:335–42.
- Mountjoy M, Junge A. The role of international sport Federations in the protection of the athlete's health and promotion of sport for health of the general population. *Br J Sports Med* 2013;47:1023–7.
- Fältström A, Kvist J, Gauffin H, *et al*. Female soccer players with anterior cruciate ligament reconstruction have a higher risk of new knee injuries and quit soccer to a higher degree than Knee-Healthy controls. *Am J Sports Med* 2019;47:31–40.
- Fältström A, Hägglund M, Kvist J. Patient-reported knee function, quality of life, and activity level after bilateral anterior cruciate ligament injuries. *Am J Sports Med* 2013;41:2805–13.
- Kostogiannis I, Ageberg E, Neuman P, *et al*. Activity level and subjective knee function 15 years after anterior cruciate ligament injury: a prospective, longitudinal study of nonreconstructed patients. *Am J Sports Med* 2007;35:1135–43.
- Hallal PC, Andersen LB, Bull FC, *et al*. Global physical activity levels: surveillance progress, pitfalls, and prospects. *Lancet* 2012;380:247–57.
- van Melick N, van Cingel REH, Brooijmans F, *et al*. Evidence-based clinical practice update: practice guidelines for anterior cruciate ligament rehabilitation based on a systematic review and multidisciplinary consensus. *Br J Sports Med* 2016;50:1506–15.
- Andrew N, Wolfe R, Cameron P, *et al*. The impact of sport and active recreation injuries on physical activity levels at 12 months post-injury. *Scand J Med Sci Sports* 2014;24:377–85.
- Tigerstrand Grevnerts H. *Treatment decision after anterior cruciate ligament injury, and evaluation of measurement properties of a patient reported outcome measure*. Linköping University, 2019.



## Appendix.

Table 1. Concomitant injuries in the ACL injured group, n(%)

<b>Ligament</b>	36 (15%)	<b>Multiligament</b>	3 (1%)
MCL	32 (13%)		
LCL	5 (2%)		
PCL	1 (0.5%)		
<b>Meniscus</b>	79 (32%)	<b>Both medial and lateral</b>	15 (6%)
Medial meniscus	39 (16%)		
Lateral meniscus	55 (22%)		
<b>Cartilage</b>	16 (6%)		

*In total 247 MRIs were available for systematically review.*



Table 2. Self reported knee function and return to preinjury physical activity rates for different knee injury diagnoses.

	Baseline		3 months		6 months	
		n		n		n
IKDC m (SD)						
ACL	43 (15)	230	54 (17)	200	63 (19)	151
Ligament	59 (19)	21	71 (20)	20	76 (19)	16
Meniscus	50 (19)	6	43 (17)	6	77 (7)	6
Cartilage	68 (1)	2	64 (24)	4	61 (36)	2
Patella	41 (11)	16	66 (15)	19	65 (17)	12
Other	50 (16)	25	67 (19)	20	80 (17)	13
SANE m (SD)						
ACL	39 (20)	270	62 (20)	222	66 (21)	210
Ligament	45 (17)	27	76 (20)	19	79 (26)	16
Meniscus	45 (23)	8	62 (13)	6	69 (34)	5
Cartilage	68 (18)	5	70 (42)	2	65 (49)	2
Patella	37 (19)	22	67 (28)	18	69 (21)	12
Other	53 (20)	34	79 (15)	19	82 (14)	12
Return to pre-injury physical activity, yes/no (%)						
ACL			10/90	201	17/83	168
Ligament			45/55	20	35/65	17
Meniscus			0/100	6	33/67	6
Cartilage			50/50	4	50/50	2
Patella			32/68	19	31/69	13
Other			33/67	21	62/38	13